

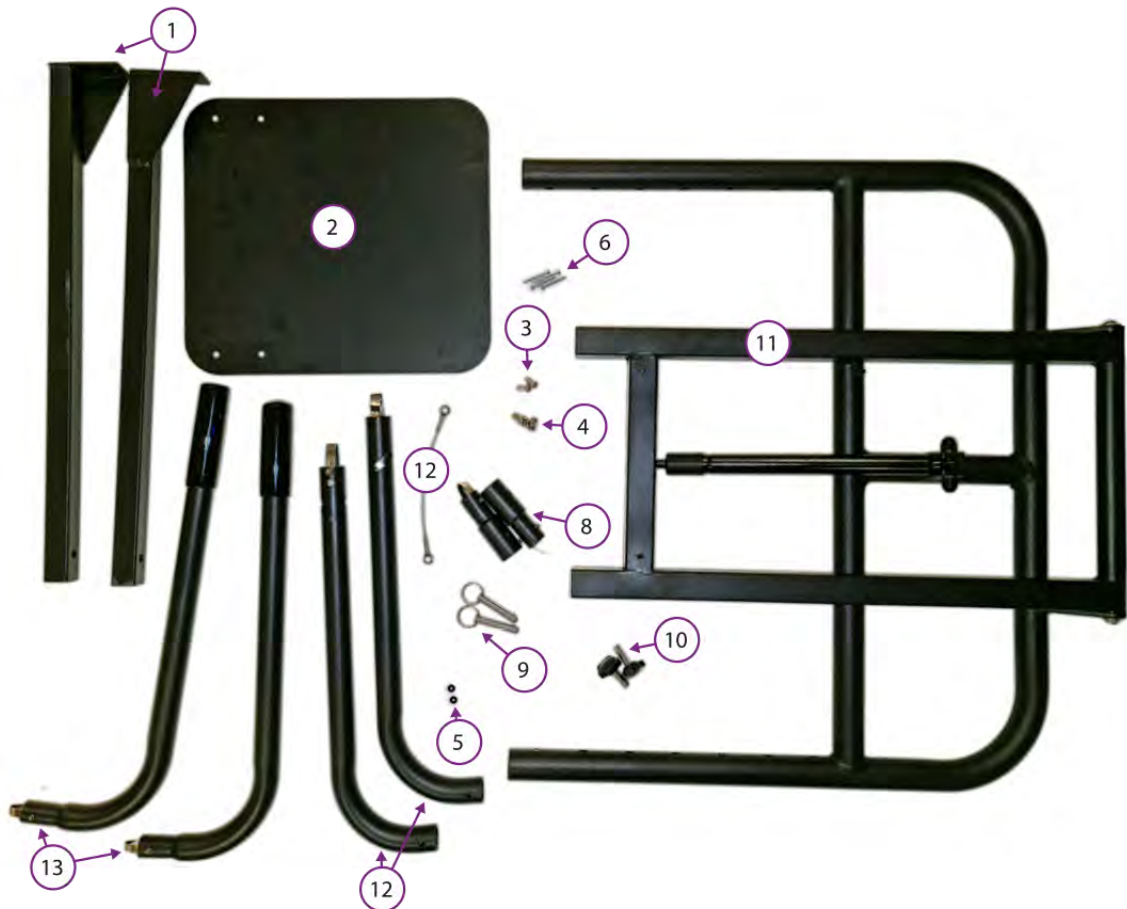
Cover Convoy

Installation Instructions



Cover Conveyor Installation Instructions

No.	Part	Quantity
1	Support Legs	2
2	Base Plate	1
3	Nut	2
4	Bolt	4
5	Washer	2
6	Screws	4
7	Locking Cable	1
8	Arm Extensions	2
9	Stopping Pins	2
10	Tightening Bolt	2
11	Lifter Main Frame	1
12	Turnable Arms	2
13	Adjustable Arm	2



- Make sure that you have all the parts from the parts list
- Note: All left and right directions are from standing in front of Hot Tub

Cover Convoy Installation Instructions

STEP 1:

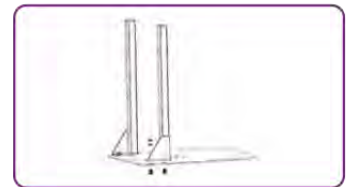
Using two bolts (No.4) one washer(No.5) and one nut(No.3), bolt the left support leg (No.1) to the base(No. 2)

NOTE: Confirm you have the leg turned correctly before mounting. (Fig. 1)



STEP 2:

Repeat step #1 for the right support leg (No.1) for the mounting to the cover lifter base. (Fig. 2)



STEP 3:

Now using a spa jack "Not Supplied". Lift the spa up and slide the cover lifter base (No.2) under the spa until the base plate is flush with the hot tub floor vertically.

NOTE: When lifting the spa make sure that you centre the cover lifter base on the spa. (Fig. 3)



STEP 4:

Grab the cover lifter main frame (No.9) and slide it onto the left and right legs (No.1). (Fig. 4)



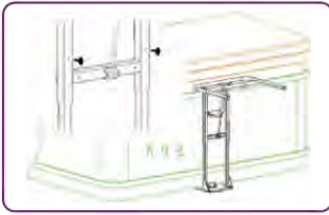
STEP 5:

Safely stand to side and allow the cover lifter main frame (No.11) to pivot outwards. (Fig. 5)

STEP 6:

Slide the cover lifter main frame (No.11) either up or down to allow the Hot Tub Cover to slide evenly along the top of the spa lip into the cover basket. (Fig. 6)





Cover Convoy Installation Instructions

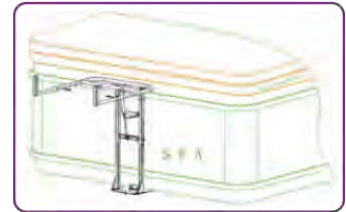
STEP 7:

When the lifter main frame (No.11) is level with spa lip, fasten two tightening bolts (No.10) on each side of the support brackets where the two holes are pre drilled. (Fig. 7)

STEP 8:

Now turn the left and right turntable arms (No.12) so they are vertical with the main tube assembly to allow you to put the stopper pins in (No.9).

NOTE: Make sure that both arms are even with one another when installing the locking pins. (Fig. 8)



STEP 9:

The length of the turnable arms towards the inside of the spa will raise the cover height when in the open position. (Fig. 9)



STEP 10:

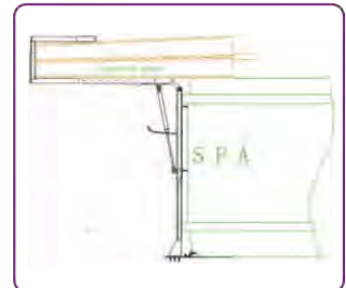
Flip the hot tub cover in half and measure thickness to confirm if you need to install arm extensions (No.6).

STEP 11:

Repeat on the opposite side.

STEP 12: (optional)

Using the four screws (No.6) provided to fasten the cover lifter frame to the cabinet. This makes the cover lifter much more sturdy when opening and closing the cover lifter.



STEP 13:

Now apply all black PVC caps to screws and Bolts.

STEP 14:

Cover lifter is now ready for use.

STEP 15: (optional)

Locking Cable supplied if you would like to secure the cover lifter in the closed position.

NOTE: Turnable arms can be turned in closed position for aesthetics.